



Simon's favourite ethnic patterns and love of yellow and red weren't to his fiancée Caroline's (pictured below) taste

BEFORE



DESIGN TIP
If you extend at the back of a terraced house, it's important not to lose natural light in a middle dining room. Consider creating a double reception room by knocking down a partition wall to bring in light from the front of a house

The sitting area is a stylish mix of neutral shades. Designers Guild upholstered the sofa in Varese moleskin from Graham and Green. A large mirror from Estilo Home emphasises the light from the generous bay window, while a cowhide rug, from South America Direct, reflects Simon's love of ethnic prints

Traditional home redesign

While planning their wedding, Caroline and Simon Everard chose to makeover the house they would share to suit their individual styles

WORDS PAT GARRATT PHOTOGRAPHS RACHAEL SMITH



FACT FILE

THE OWNERS

Caroline Everard, a housewife, lives here with her husband Simon, who runs his own market research agency

THE PROPERTY

A three-bedroom mid-terrace house built in the Victorian period

THE LOCATION

Putney Common, south London

WHAT THEY SPENT

Simon bought the property for £545,000 in 2002 – it was recently valued at £850,000. The couple have spent £20,000 on a makeover, which involved redecoration



'The main attraction is our sitting room, which has been transformed into a cool, elegant space with wow-factor'

Caroline and Simon Everard returned from their honeymoon in 2008 to a home that had been transformed. They had planned a redesign while organising their wedding, and the work took place while they were out of the country.

'This house belonged to Simon long before we met,' Caroline explains, 'and I didn't move in until after our honeymoon, when he picked me up and carried me over the threshold.'

When Caroline first met Simon he had already completed renovation work on the property, extending the kitchen sideways

and into the back garden. He had also raised the roof in the loft's guest bedroom and updated the two bathrooms.

'I was very impressed by what he had done, but it was very much a bachelor pad,' adds Caroline, who had recently sold her own flat and was living with her sister. 'As soon as we started planning our wedding, ►



BEFORE

Above and below The dining room and kitchen were small, dark and dated before Simon extended the kitchen

out into the back garden and side return during previous renovation work when he merged the two spaces together



BEFORE



Above This smart galley kitchen is a bespoke design with the wood stained a walnut shade – for similar, try the Broadoak

Natural from Second Nature. The work surfaces are made from hardwearing quartz composite from Okite



Above The open-plan kitchen/diner mixes Simon's favourite natural materials of wood, glass and iron. The contemporary gas hob and electric oven with a warming drawer are from Neff

Left Folding sliding doors connect the outdoor patio to the kitchen to create a larger dining and entertaining space. The teak garden furniture is from Indian Ocean Trading

DESIGN TIP
Options for bringing in light from above on a side extension to a terraced house include frameless roof lights for a flat roof, or conventional roof lights for a pitched roof – but the ultimate is a completely glazed roof using



'I was impressed with Simon's newly renovated modern kitchen – but the house still felt like a bachelor pad'

we started thinking about turning Simon's house into our home,' she continues. 'I must admit, the décor wasn't really to my taste. I like soothing neutral shades, while Simon prefers bright colours – several rooms had been painted yellow.'

Simon's house was a vibrant mix of influences from all over the world. 'He was born in Kenya and had lived in South Africa, Swaziland, Greece and India as a

child,' Caroline explains. 'He particularly loves oriental and ethnic styles.'

Caroline remembers her first impression of the sitting room, with its varnished pine floorboards. 'The moment you walked in, all you saw were the orange floorboards and pine fireplace,' she says.

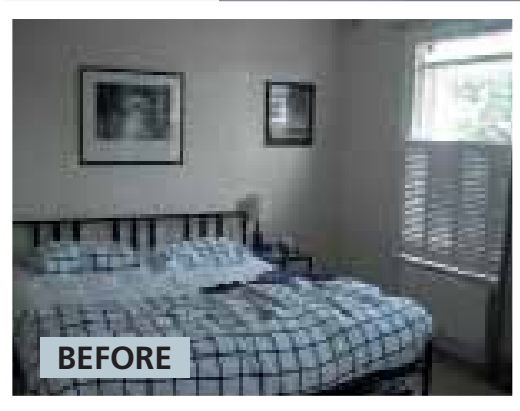
On the first floor, the master bedroom was sparse with yellow walls – and Simon's two cats, Ella and Jas, even had their own

room. 'Although I adored them, our need for a second guest room was greater, so they sleep downstairs now,' says Caroline.

The couple agreed that they needed to compromise over the décor while incorporating favourite pieces and colours. They talked through their ideas, then called in Nicola Pratt and Anne Marie Sochanik of interior designers LIFE Style just four months before their wedding day. ▶



The floors and walls of the stairway have been painted white to brighten up the space, while monochrome pictures add interest



BEFORE

Above Caroline thought the master bedroom looked too masculine and wanted to update it with softer shades



In the TV area, a large club sofa from The Conran Shop has been teamed with an elegant ponyskin hide ottoman from Alma Home. The tripod floor lamps are from Ecco Trading



PRACTICAL TIP

Paint is a stylish and cost-effective finish for stairs and floorboards and can save you the trouble of sanding and stripping, but make sure you use a hard-wearing, non-slip paint such as the Ronseal Diamond

The walls in the master bedroom have been painted with Pale Cirrus by Fired Earth to match Caroline's lamp bases, which came from Selfridges. The calming scheme is continued with a quilt from Lombok and cushions by Mulberry. A dramatic painting by figurative artist Mark Demstader completes the look

'The style of the house needed to be softened, so we called in two interior designers who integrated our ideas'

'I was worried that we'd end up with a stalemate and it would take ages to achieve the perfect look,' Caroline admits. 'I then hit upon the idea of giving Nicola and Anne Marie a scrapbook of magazine cuttings to explain my style – relaxed, stylish, elegant, greys, neutrals and mixing old with new. They got the feel for Simon's style – yellow, green and natural materials like wood and iron – by walking around the house, then they simply integrated the two.'

Not all of the rooms needed a redesign, however. The kitchen-diner and two bathrooms were fine as they had already been updated or renovated.

'Generally, though, the style of the house just needed to be softened,' says LIFE Style's Nicola. 'We simply created a series of mood boards and presented our ideas to Caroline and Simon.'

Nicola and Anne Marie then turned their

ideas into reality. They started work at the top of the house in the master bedroom, where they stripped the floorboards and painted them white to create a neutral canvas for the furnishings and to brighten the space. They painted the yellow walls in a cool lavender grey shade, which now works beautifully with Caroline's grey lamps and satin cushions.

As Caroline thought Simon's bedding was a little too masculine, it was swapped

for plain white bedlinen with a lavender quilt. She wanted to replace his black metal bed and side tables, but Simon was adamant about keeping them.

'I'm happy with the compromise,' says Caroline. 'Our room is neither too feminine nor too masculine now.'

Next, Nicola and Anne Marie moved on to the loft guest room, keeping the existing neutral carpet but painting the yellow walls in a grey taupe. The pine bed was painted off-white before being subtly distressed.

'It now looks really welcoming, just like a stylish hotel room,' says Caroline. 'Our friends and family love sleeping in there when they come to stay.'

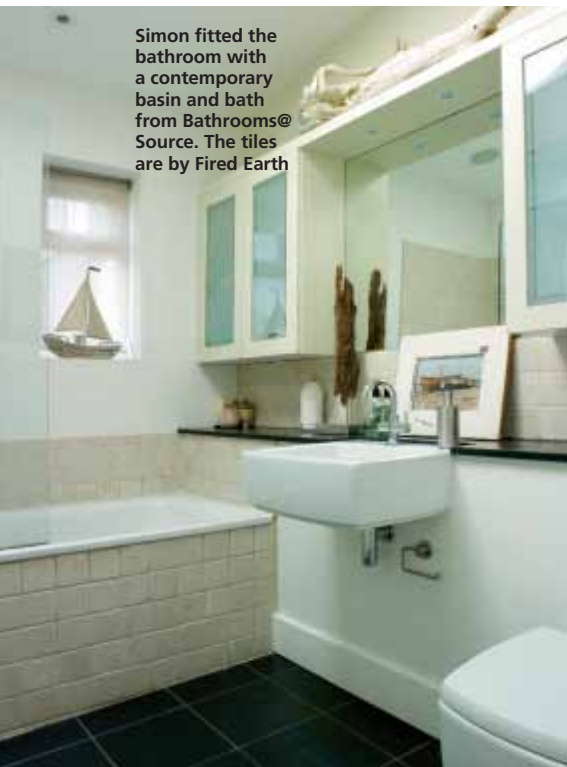


Caroline's velvet chair from Habitat was the starting point for the scheme in the second bedroom, with bedlinen from Designers Guild echoing the cream and pink theme. The bed, side table and chest of drawers are Simon's original furniture

Right The loft guest room had dated décor, with a 1980s wallpaper border and a vibrant two-tone colour scheme



A softer look has been created in the loft bedroom. The bed and table have been updated in Pointing by Farrow & Ball, while the walls are painted with Skimming Stone, also Farrow & Ball. The lamp base and throw are from The White Company



Simon fitted the bathroom with a contemporary basin and bath from Bathrooms@Source. The tiles are by Fired Earth

The second bedroom, which was once the domain of the cats, has been given a feminine makeover. Caroline's bright fuchsia chair inspired the pink, cream and white décor, with its pink tones picked out in the new bedlinen.

The main attraction though is the downstairs sitting room which has been transformed into an elegant space with white-painted floorboards, console tables in the alcoves, flattering lamplight instead of downlighters and – for the wow-factor – an ethnic-style cowhide rug.

When Simon carried Caroline over the threshold into their new home, she could barely believe what the two designers had achieved in such a short space of time.

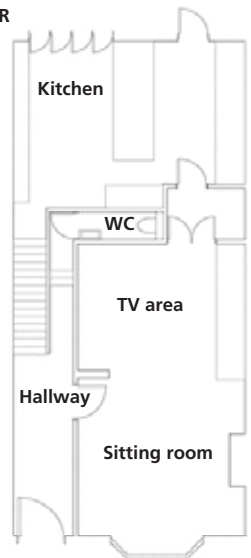
'When I opened the door to the sitting room, it was just like that moment on *DIY SOS* when the owners first see their new makeover,' laughs Caroline.

'We were amazed at how much the white-painted floorboards have brightened up the rooms here. LIFE Style has achieved something that we could never have done on our own,' she adds. 'It's so stylish and

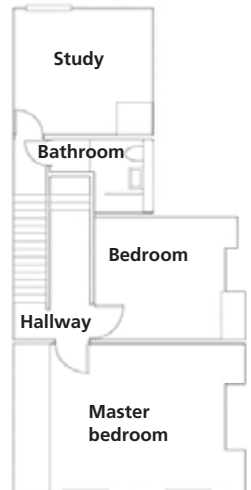
PLANS

GROUND FLOOR

Simon had previously extended the kitchen and renovated the bathrooms, so it was spacious enough when the couple started their makeover project. As a result, they didn't change the layout of the house



FIRST FLOOR



SECOND FLOOR



COSTS

LIFE Style interior design, furnishing and accessories £20,000

TOTAL £20,000